

PRÂNA AND THE CHAKRAS

Theosophy Presented in Graphical Form

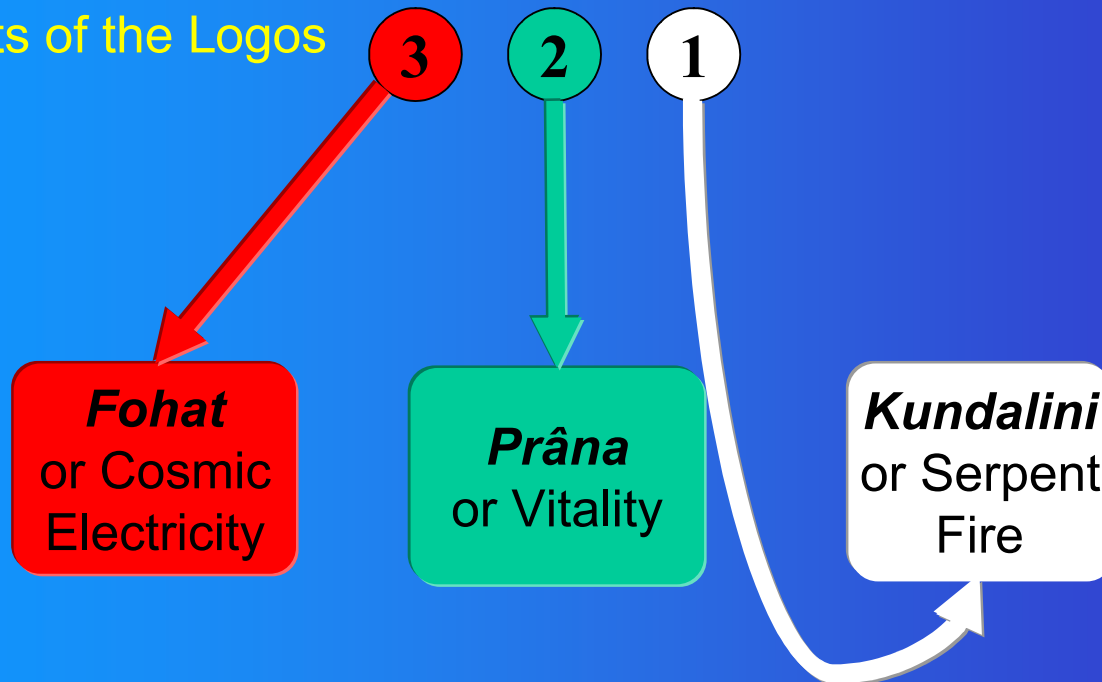
Made by Anand Gholap from PowerPoint slides created by Dr. KVK. Nehru. For more information on Theosophy visit

www.MahatmaCWLeadbeater.org

The Solar Forces

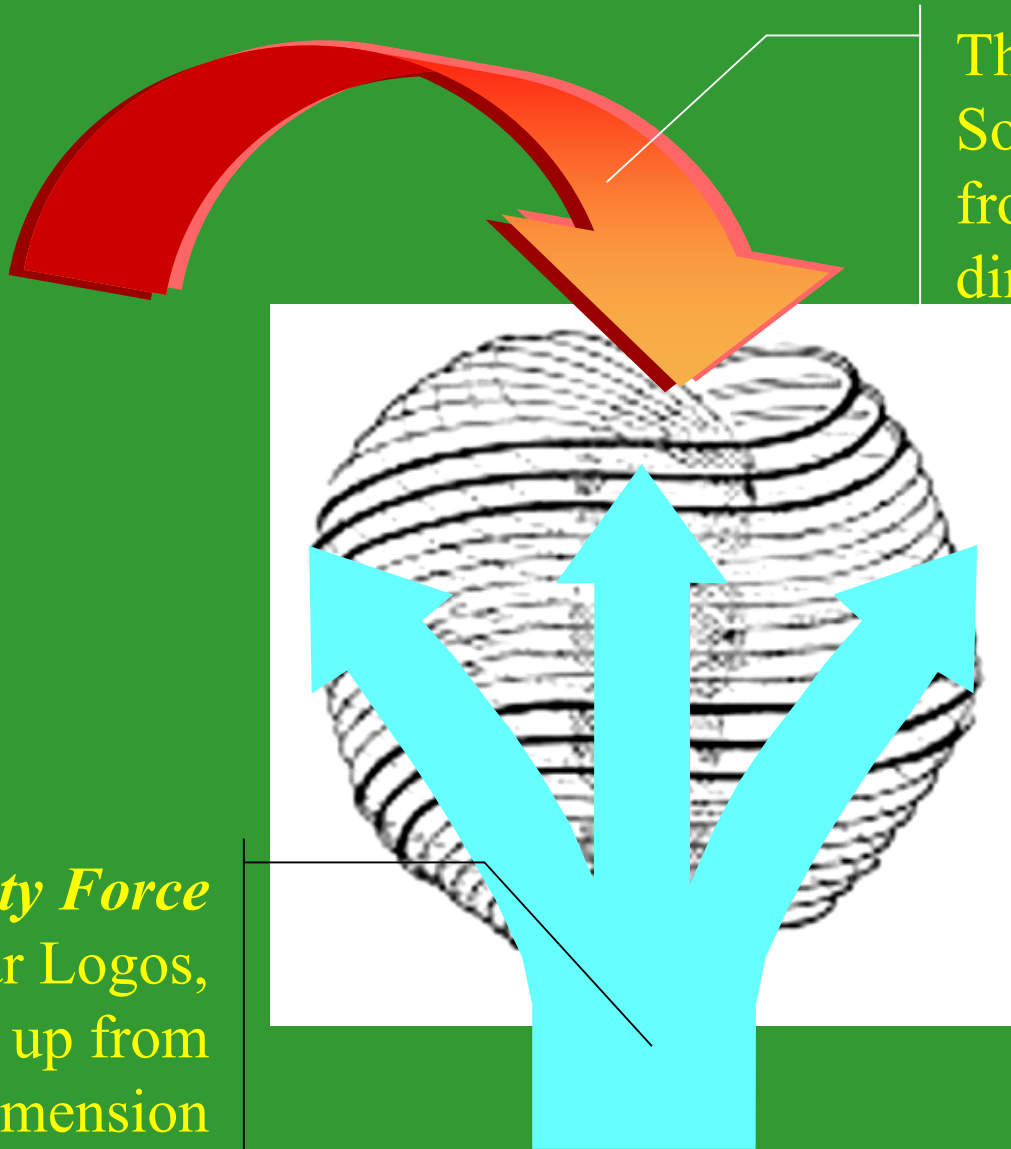


Aspects of the Logos



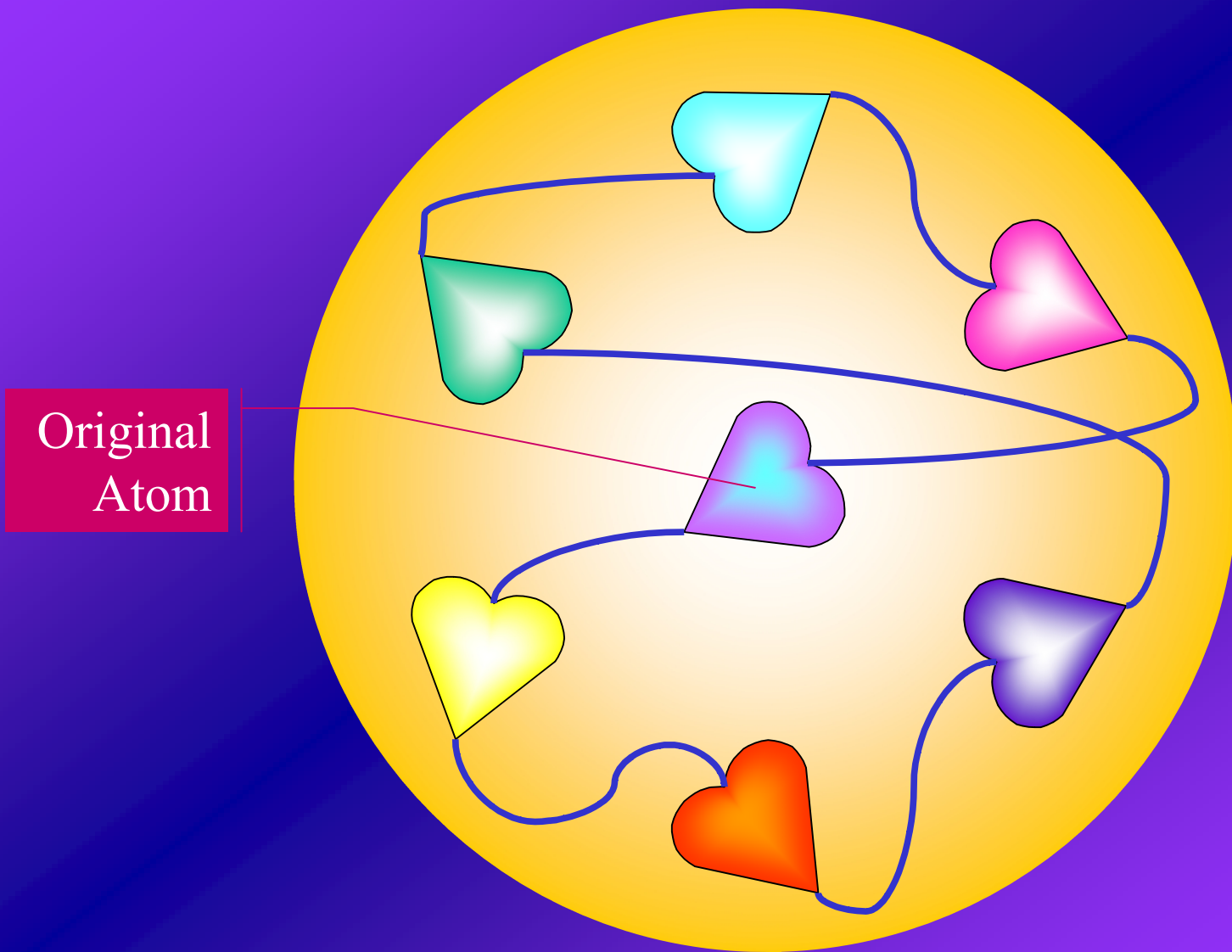
The *Ultimate Physical Atom*

The *Will Force* of Solar Logos, welling up from another dimension

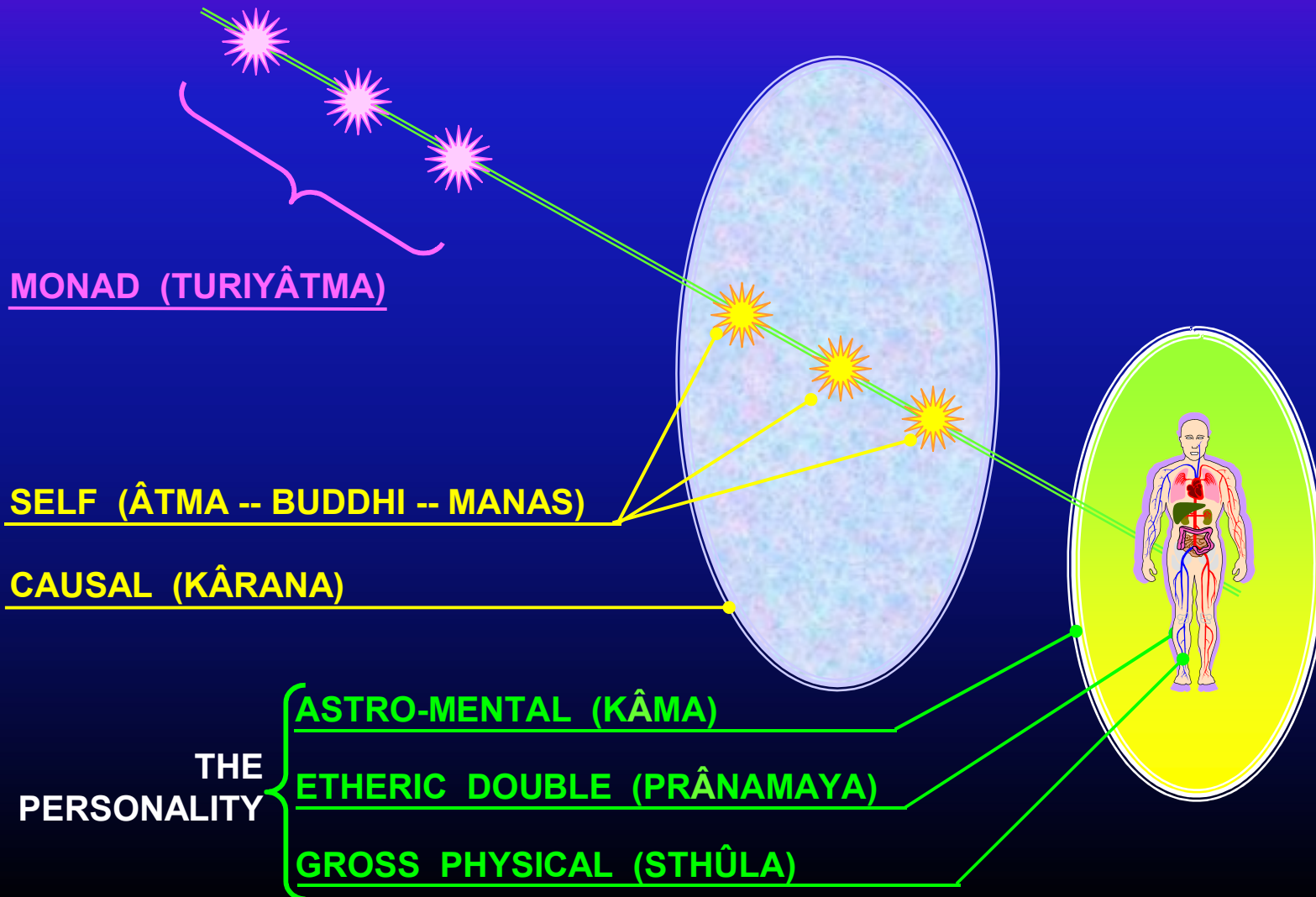


The *Vitality Force* of Solar Logos, welling up from another dimension

The Vitality Globule



The Constitution of the Human Being



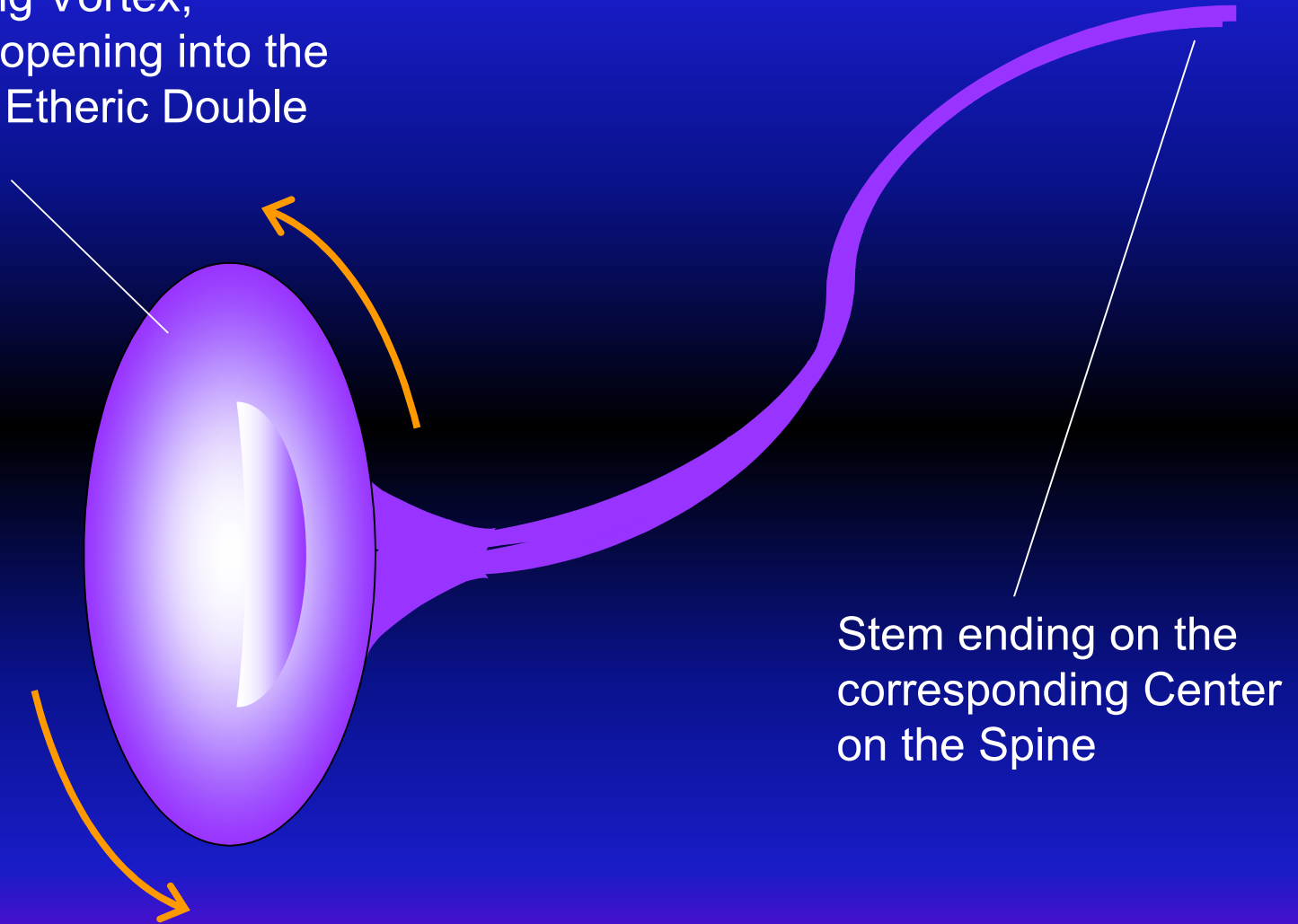
Functions of the Etheric Double



- 1** *To act as a Mold for the building of the Physical Body*
- 2** *To absorb Prâna and distribute it through out the Body*
- 3** *To act as a bridge between the Physical and the Astral Consciousness*
- 4** *To develop Force-centres through which the phenomena of the Etheric world could be cognized*

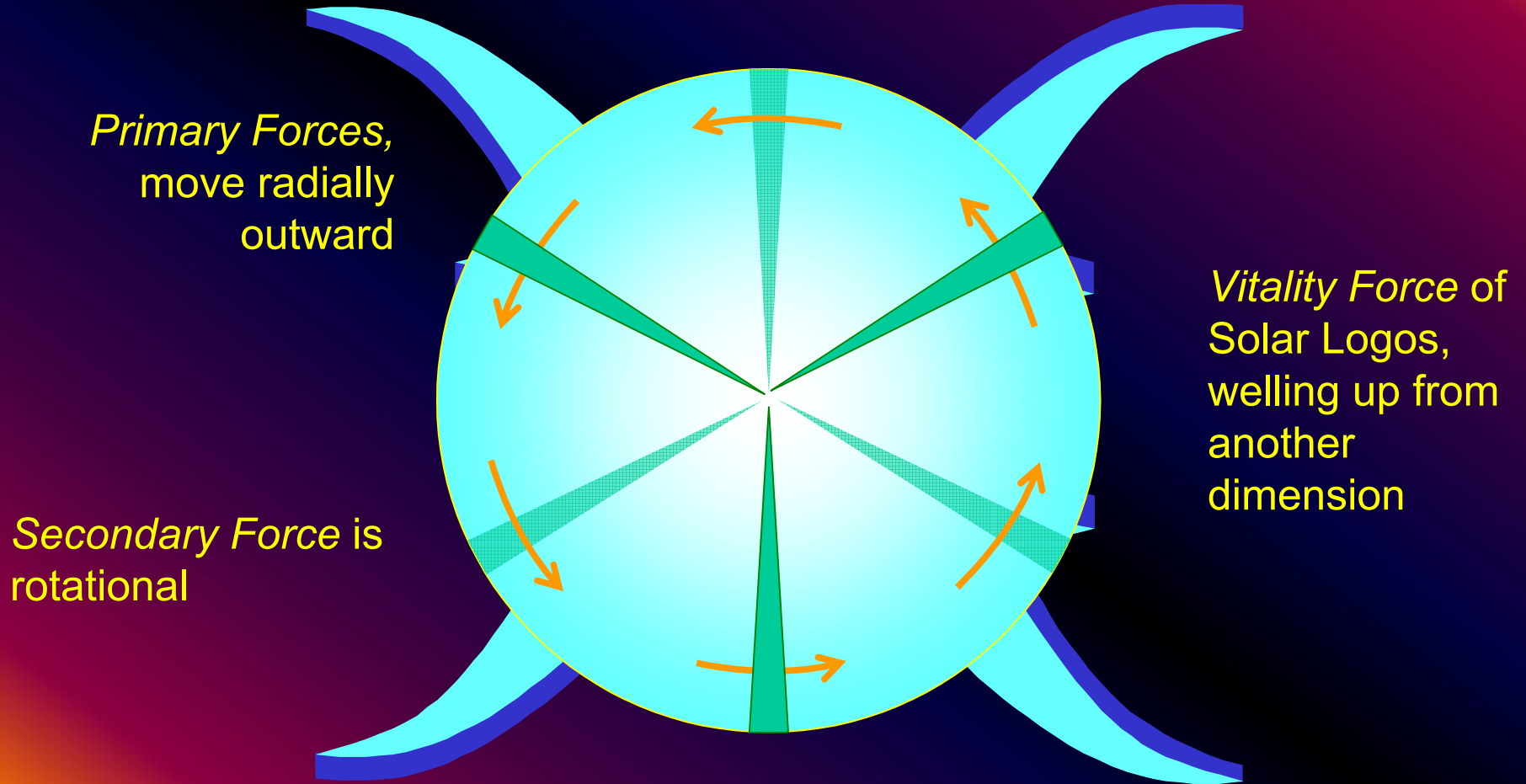
Shape of the Chakras

Rapidly rotating Vortex,
2 to 6 inches, opening into the
surface of the Etheric Double



Stem ending on the
corresponding Center
on the Spine

Structure of the Chakra



Working of the Chakra

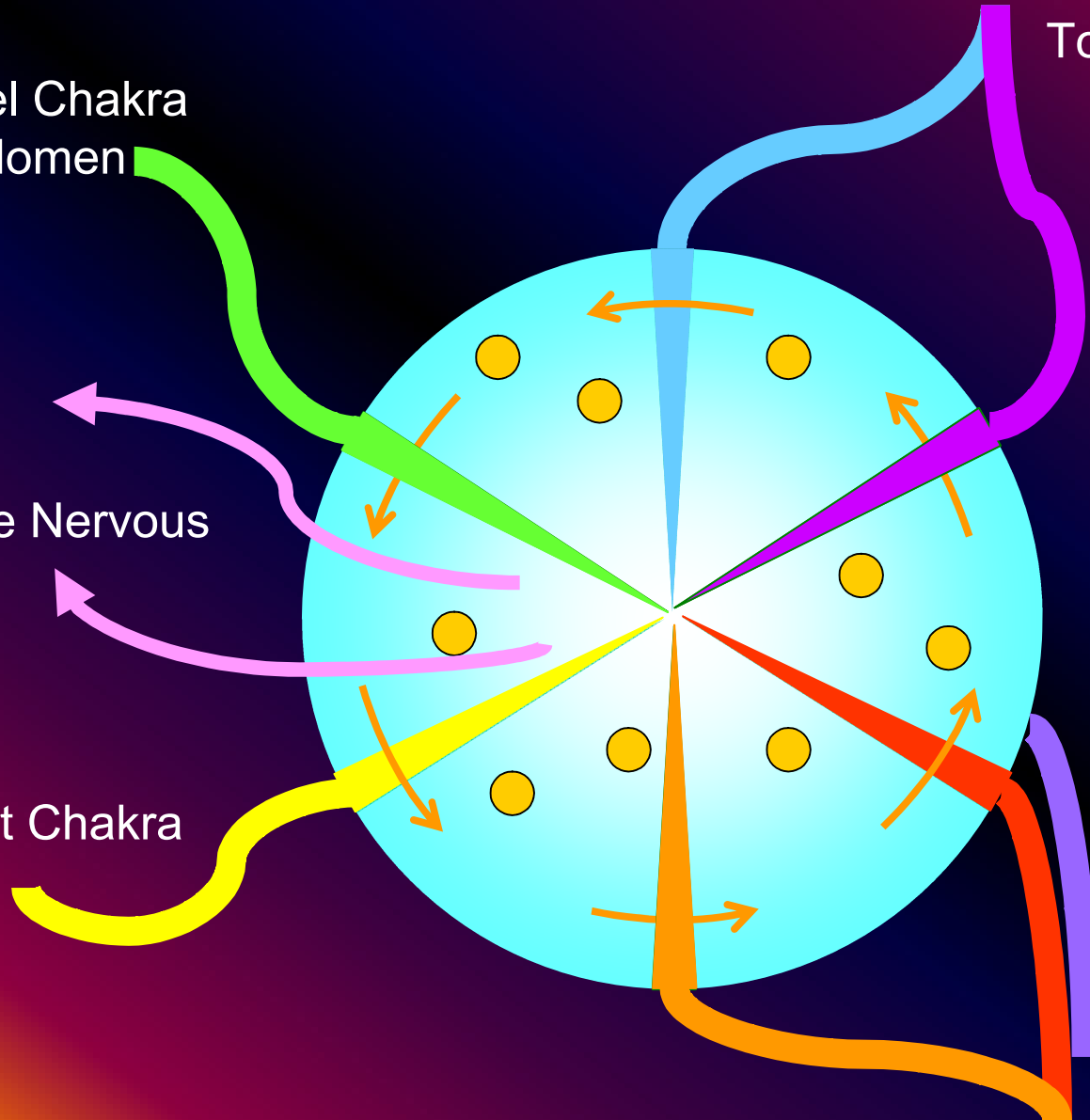
To Navel Chakra
and Abdomen

To Throat Chakra

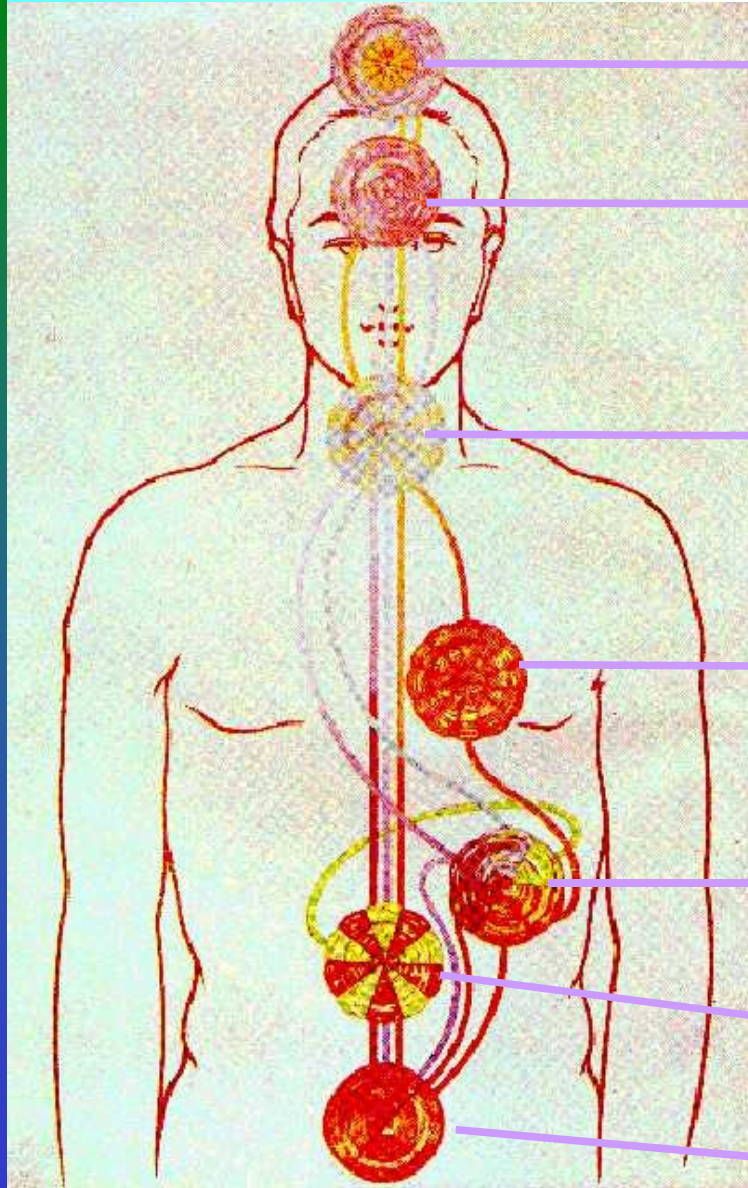
To entire Nervous
system

To Heart Chakra

To Root Chakra



Names and Functions



Sahasrâra (Crown)--**Continuity of Consciousness**

Âjnâ (Brow)--**Clairvoyance**

Vishuddha (Throat)--**Clairaudience**

Anâhata (Cardiac)--**Understanding**

*Svâdhishthâna (Splenic)--**Travelling**

Manipûra (Navel)--**Feeling**

Mûlâdhâra (Root)--**Seat of Kundalini**

Types of Nervous System

SYMPATHETIC SYSTEM

Two cords parallel to spine and in front—Ganglia, plexuses, smaller ganglia and nerves

First system to form. Formed by impulses generated the Centers in the Astral body.

Control and energize the vital organs—the heart, the lungs, the digestive system

CEREBRO-SPINAL SYSTEM

Brain, Spinal cord, Ganglia and nerves

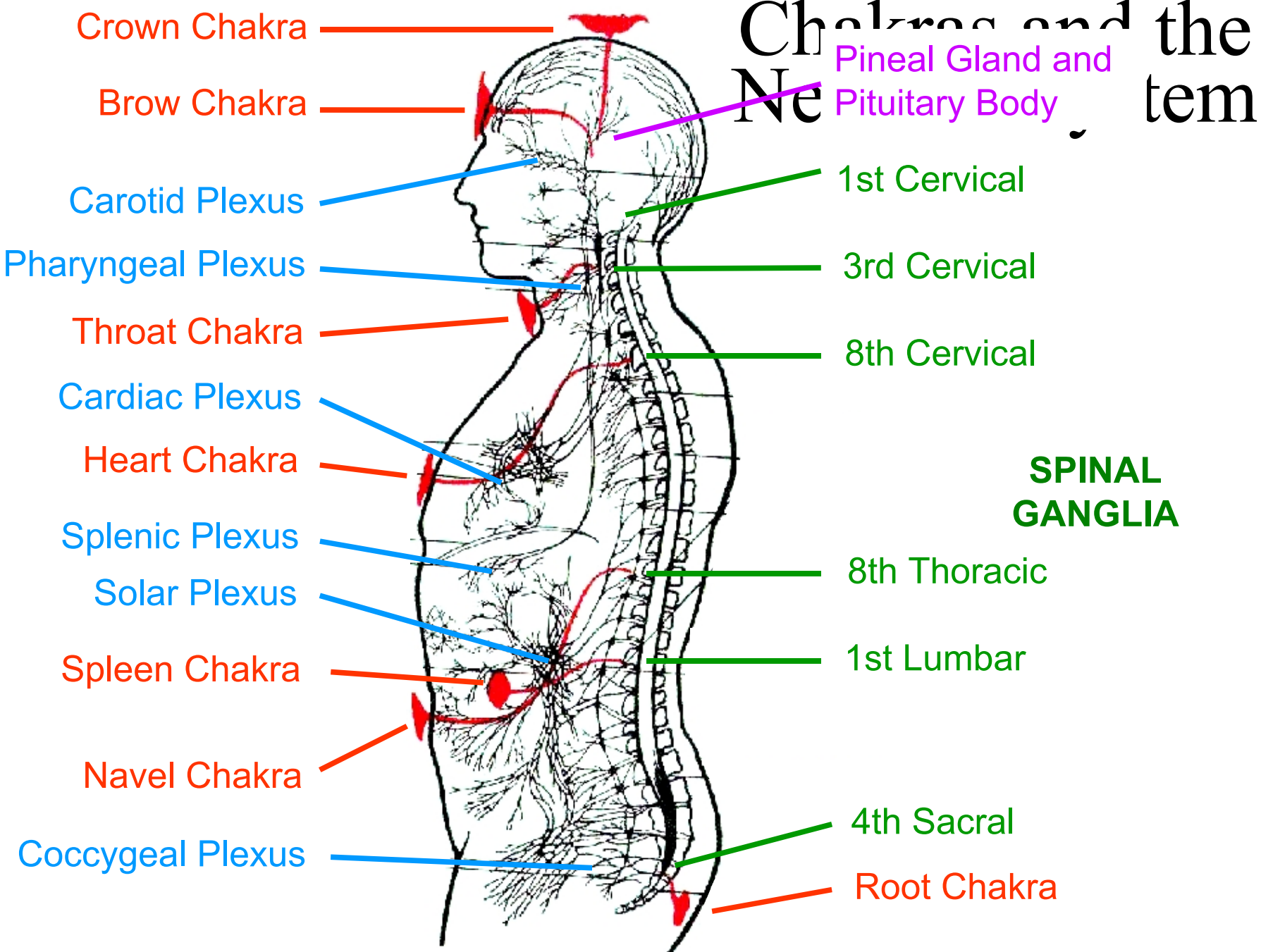
Formed by impulses generated from the Mental Plane. Formed later than the Sympathetic system

Expresses the 'waking consciousness'

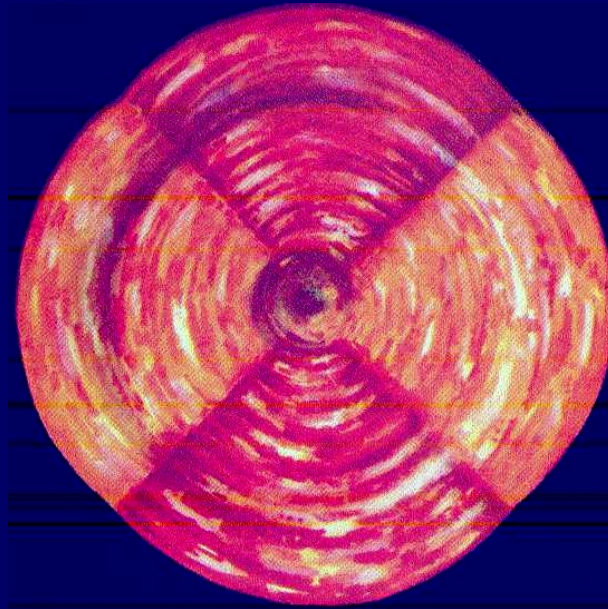
VAGUS SYSTEM

Medulla Oblongata to other nerves and Plexuses

Chakras and the Nervous System

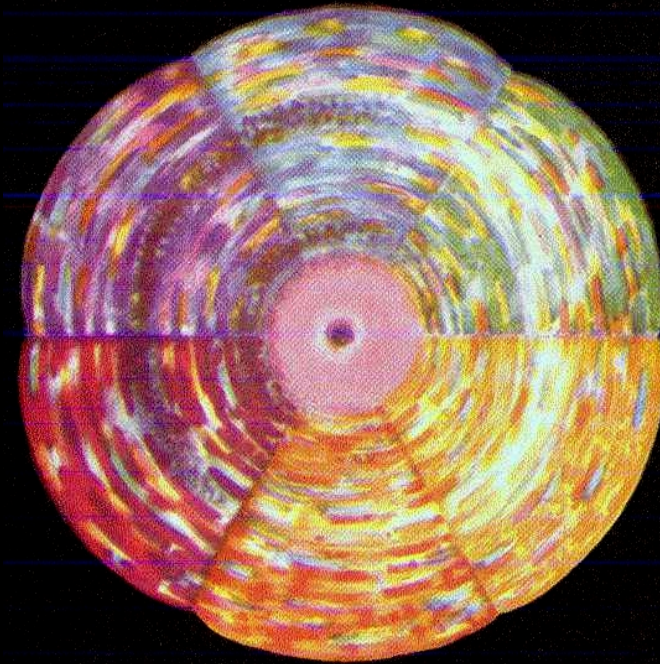


Root Chakra (*Mûlâdhâra*)



4 Spokes--Receives Orange, Red and some dark Purple Vitality from Spleen Chakra

Spleen Chakra



*6 Spokes--Absorbs Vitality Globules from **Sun** and splits them into 7 different streams*

Navel Chakra (*Manipûra*)



10 Spokes--Receives Green Vitality from Spleen Chakra

Heart Chakra (*Anâhata*)



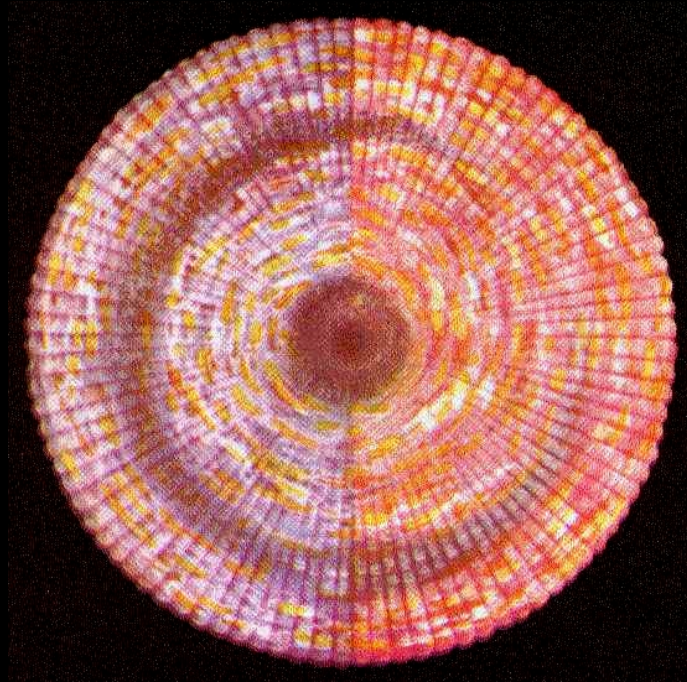
12 Spokes--Receives Yellow Vitality from Spleen Chakra

Throat Chakra (*Vishuddha*)



16 Spokes--Receives Violet and Blue Vitality from Spleen Chakra

Brow Chakra (*Ājnâ*)



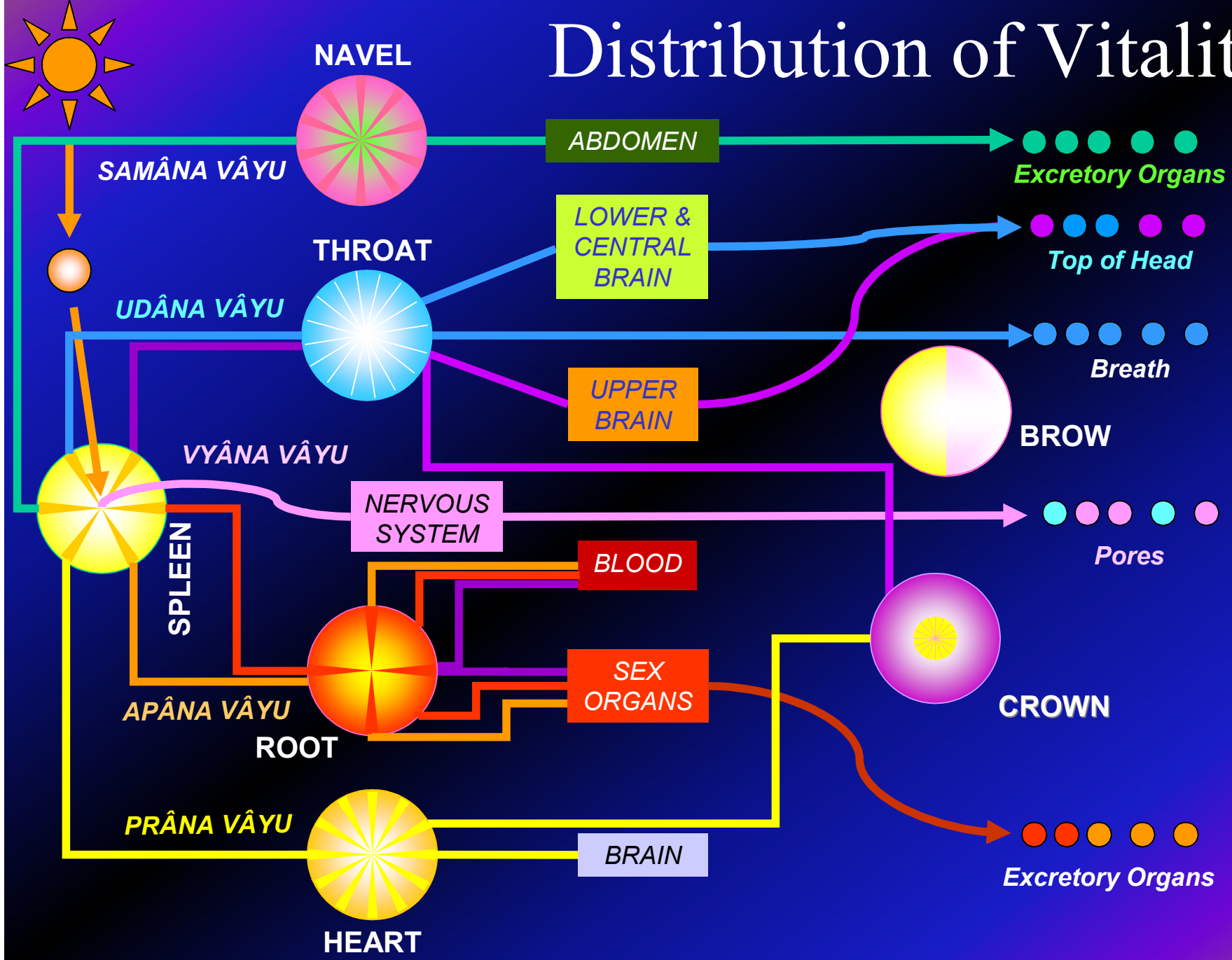
96 Spokes--Half Rose with much Yellow, half Purplish-blue

Crown Chakra (*Sahasrâra*)

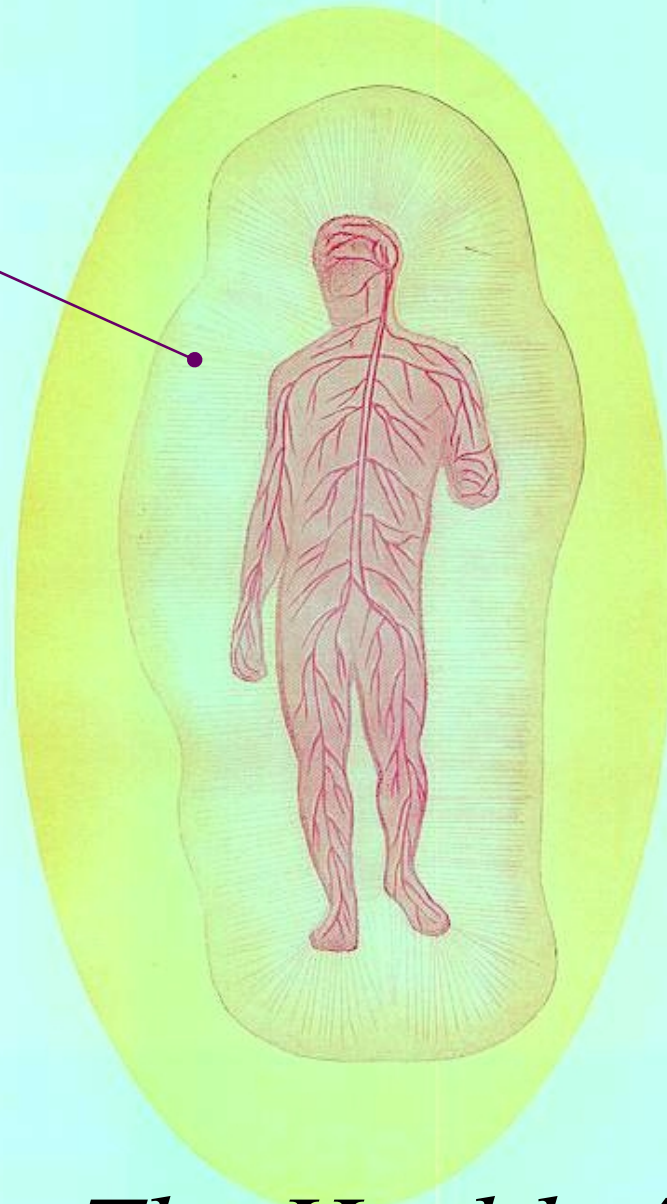


*Centre 12 Spokes, Outer 960 Spokes--Receives Yellow from **Heart Chakra** and Violet Vitality from **Throat Chakra***

Distribution of Vitality



*Excess Prâna
streaming out
from the pores*



The Health Aura (Etheric)

Modification in Developed Person

