

THE MYSTERY OF DEATH AND RE-INCARNATION

Theosophy Presented in Graphical Form

Made by Anand Gholap from PowerPoint slides created by
Dr. KVK. Nehru. For more information on Theosophy visit

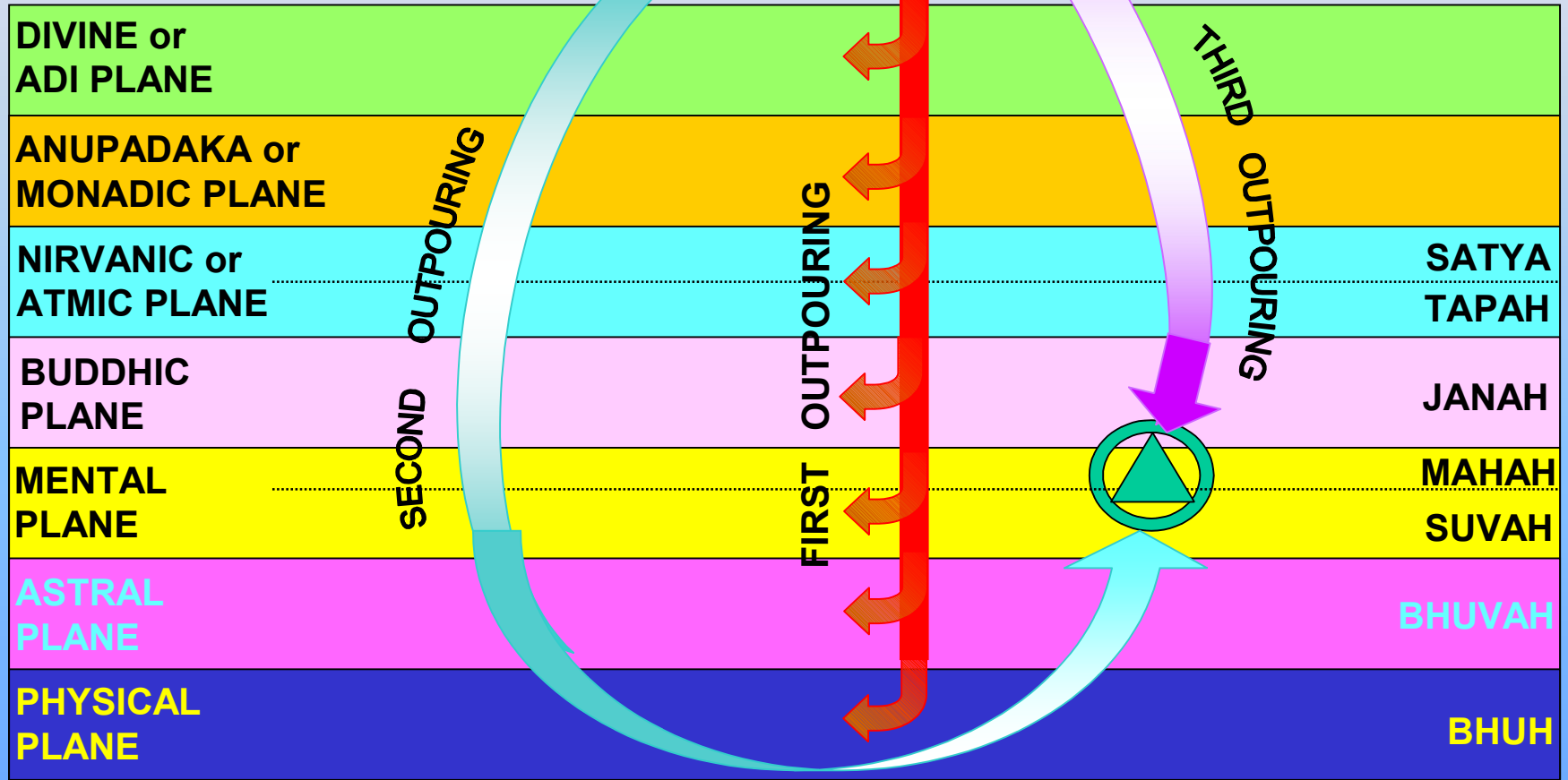
www.MahatmaCWLeadbeater.org

SOLAR LOGOS

FIRST ASPECT

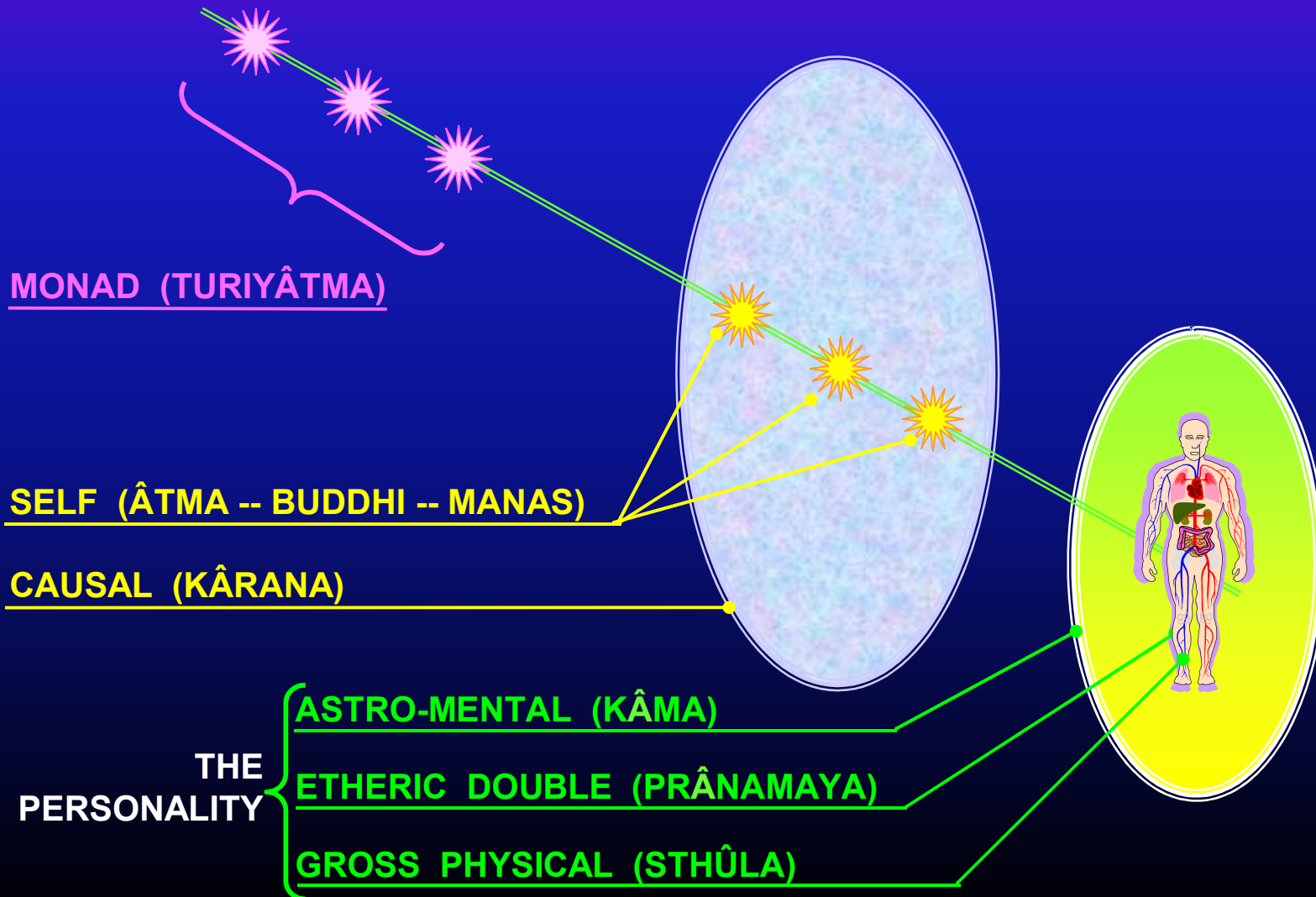
SECOND ASPECT

THIRD ASPECT



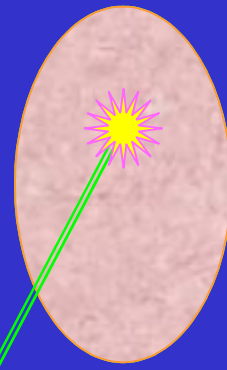
THE THREE OUTPOURINGS

The Constitution of the Human Being



The Process of **Death**

Causal



Mental



Shell

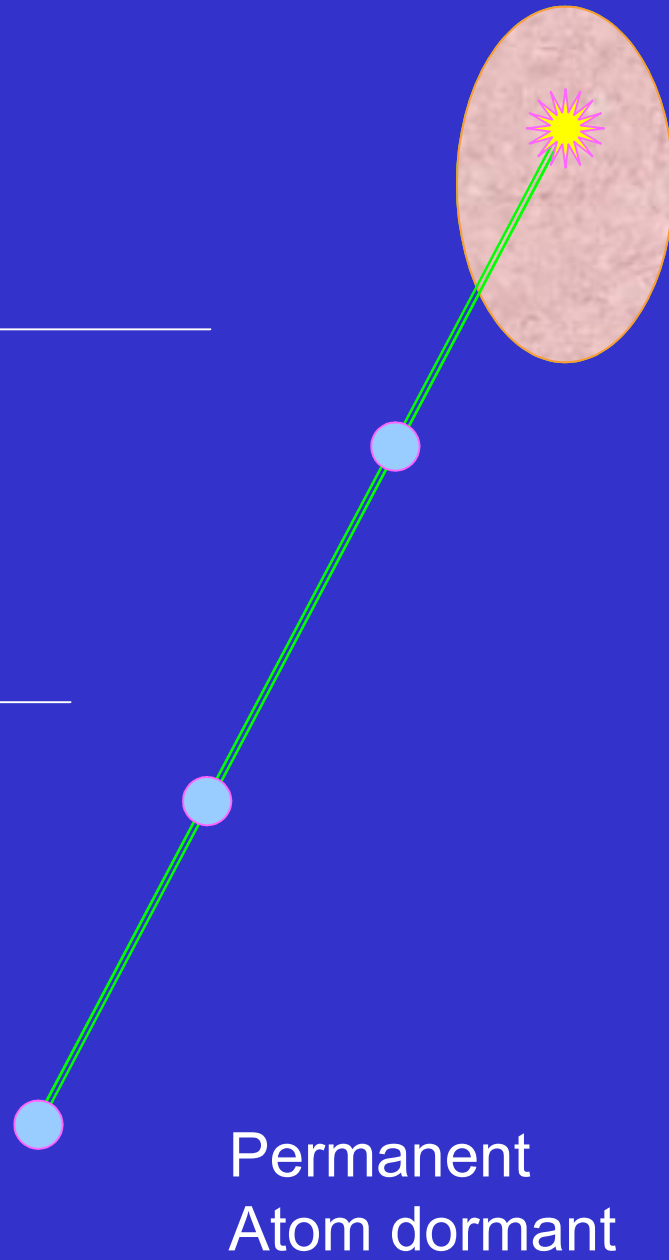


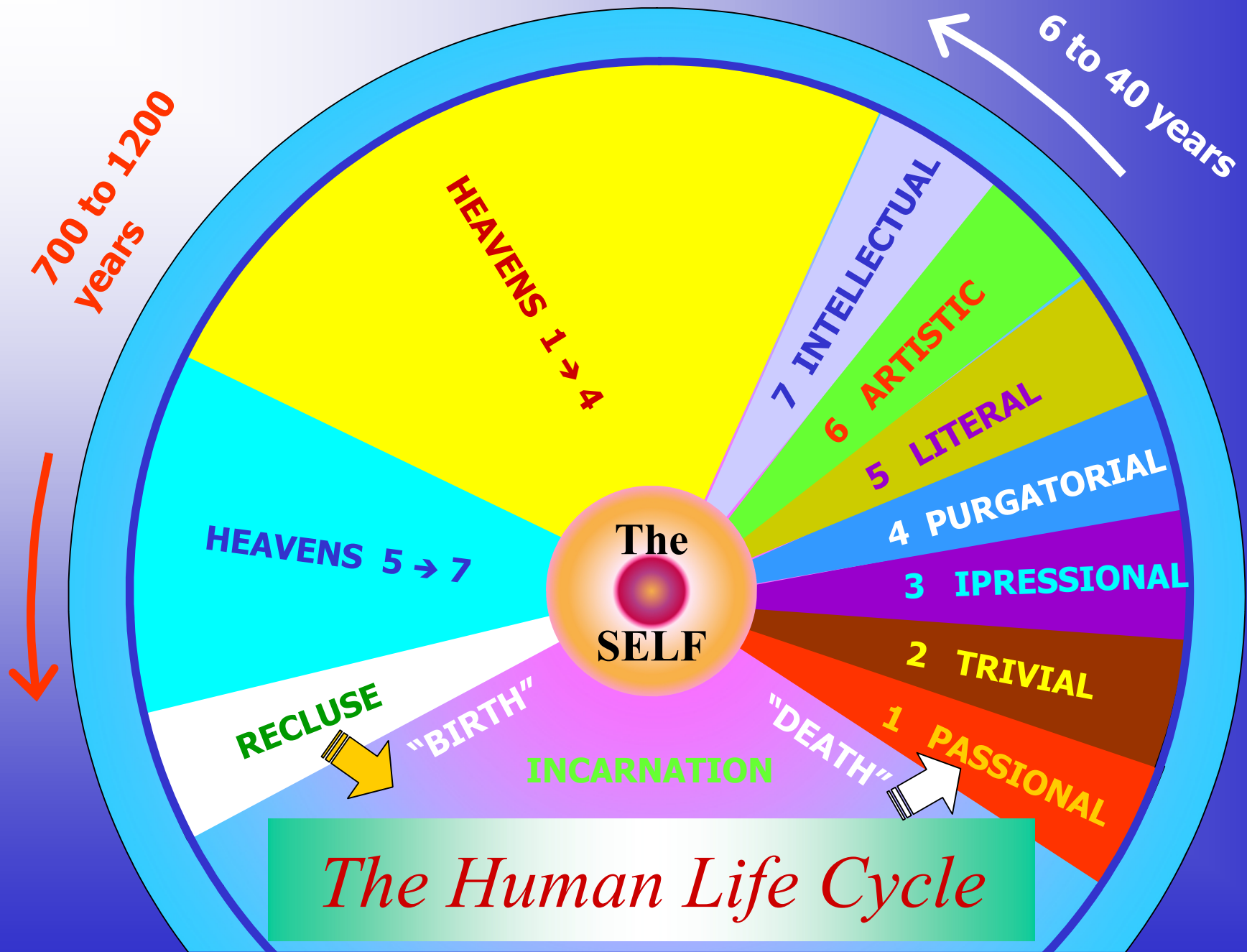
Astral



Etheric &
Physical

Permanent
Atom dormant





The Human Life Cycle

The Law of Karma

OF PAST LIFE

OF PRESENT LIFE

Helpful Actions

make

Good Environment

Hurtful Actions

make

Evil Environment

Desires & Aspirations

make

Capacities

Sustained Thoughts

make

Character

Successes

make

Enthusiasm

Experiences

make

Wisdom

Painful Experiences

make

Conscience

Will to Serve

makes

Spirituality

Operation of Karma

LIFE SIDE

Sanchita

Past
Thoughts,
Feelings,
Actions

Prârabda

Lords of
Karma
(Lipikas)

Archetype

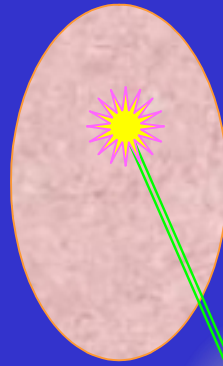


FORM SIDE

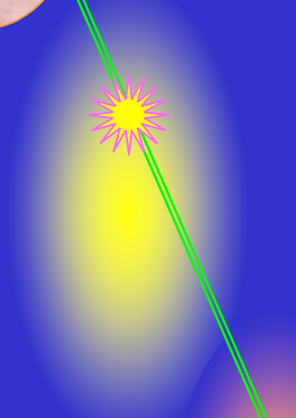
“Nerves”
Virility
Musical Ear
Mathematical Brain
Psychic Temperament
Disabling Factors
etc.

The Process of Re-incarnation

Causal



Mental



Permanent Atom
re-activated

Astral



Etheric &
Physical



Functions of the Etheric Double

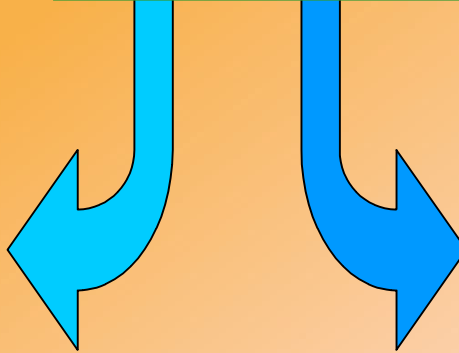


- 1** *To act as a Mold for the building of the Physical Body*
- 2** *To absorb Prâna and distribute it through out the Body*
- 3** *To act as a bridge between the Physical and the Astral Consciousness*
- 4** *To develop Force-centres through which the phenomena of the Etheric world could be cognized*

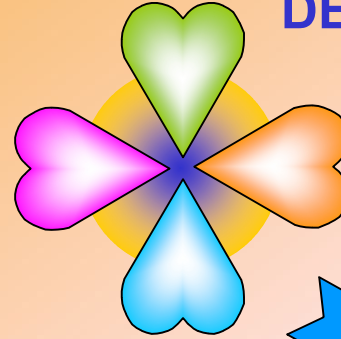
THOUGHT
FORM



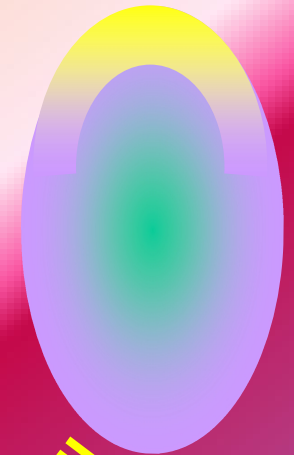
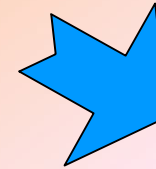
PRÂRABDA



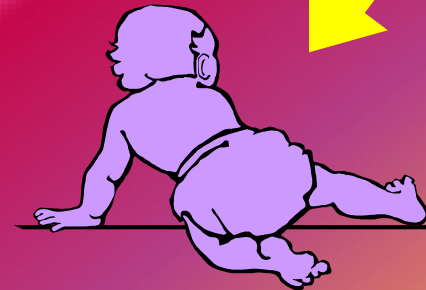
DEVARÂJAS



ELEMENTAL

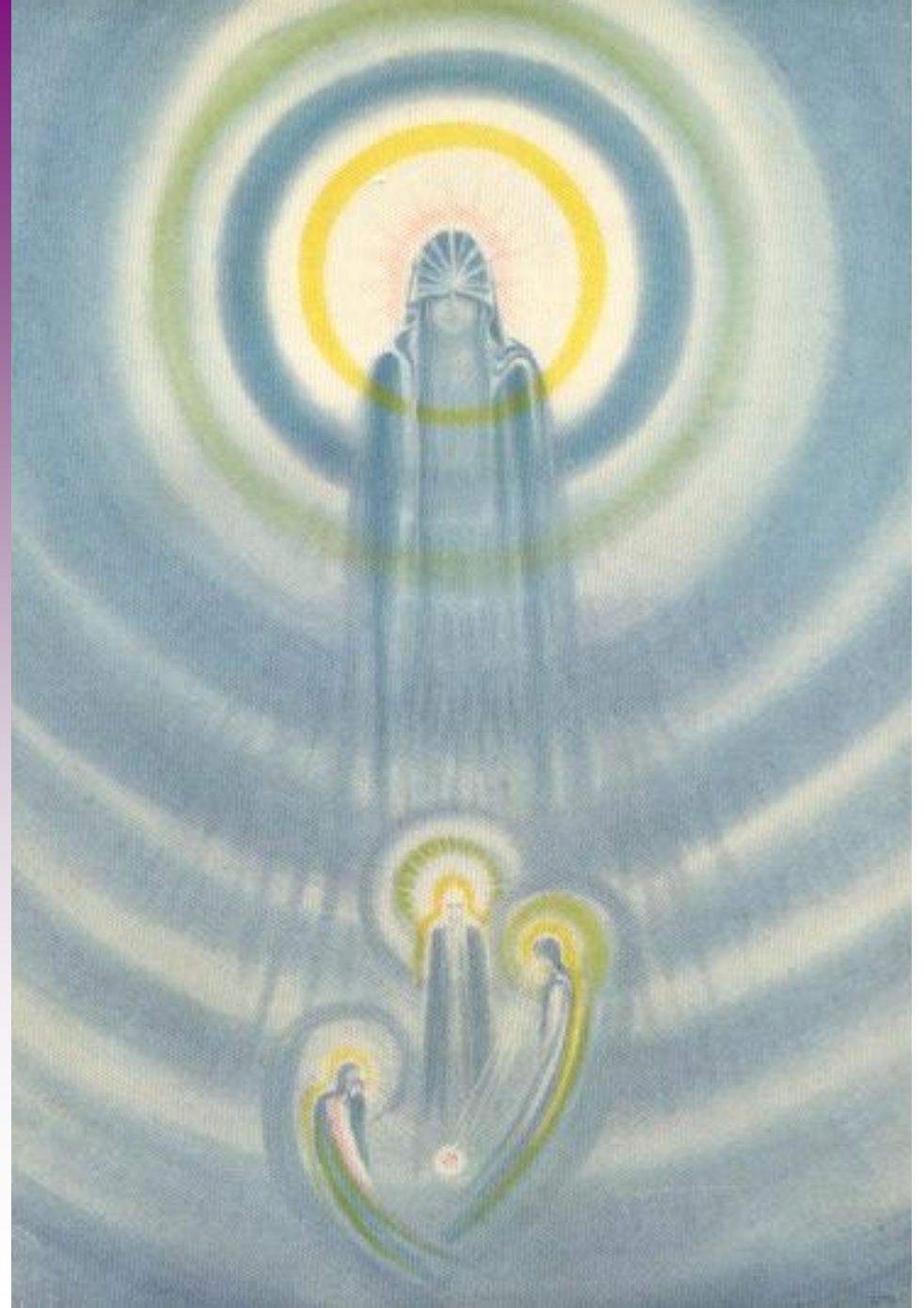


*The Mechanism
of Karma*



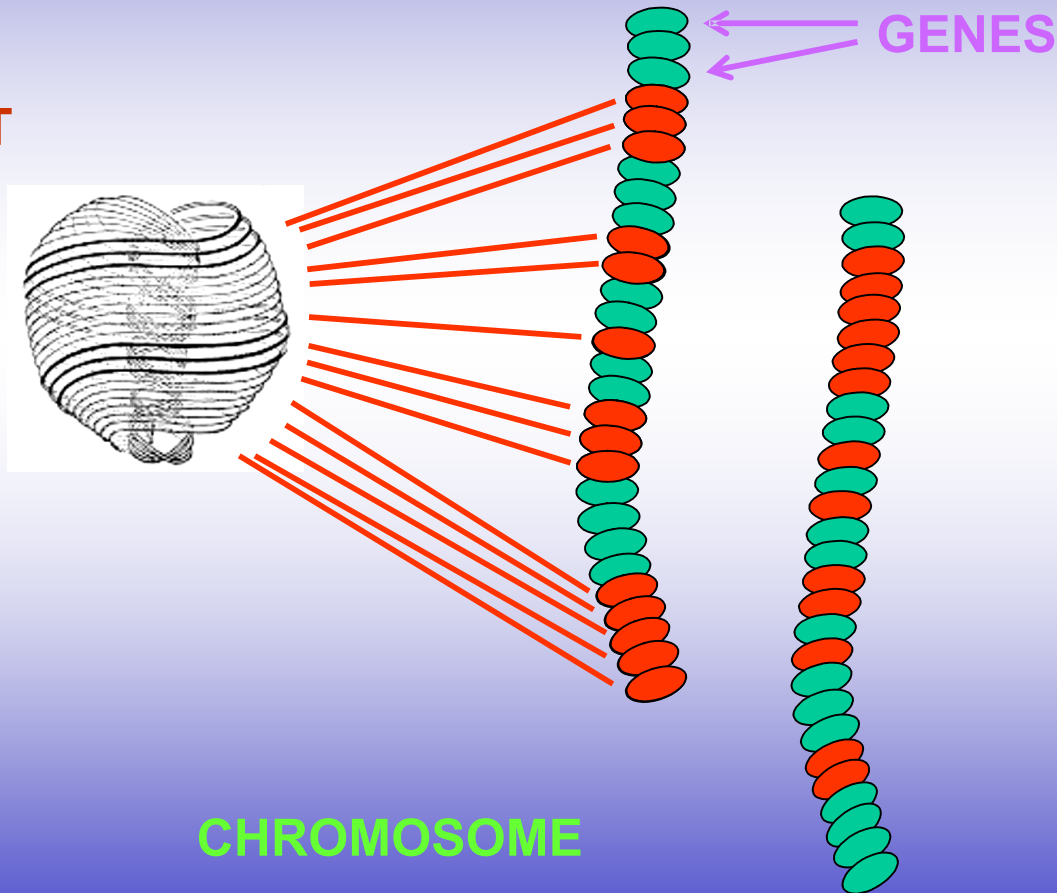
ETHERIC
DOUBLE

The World Mother at Birth

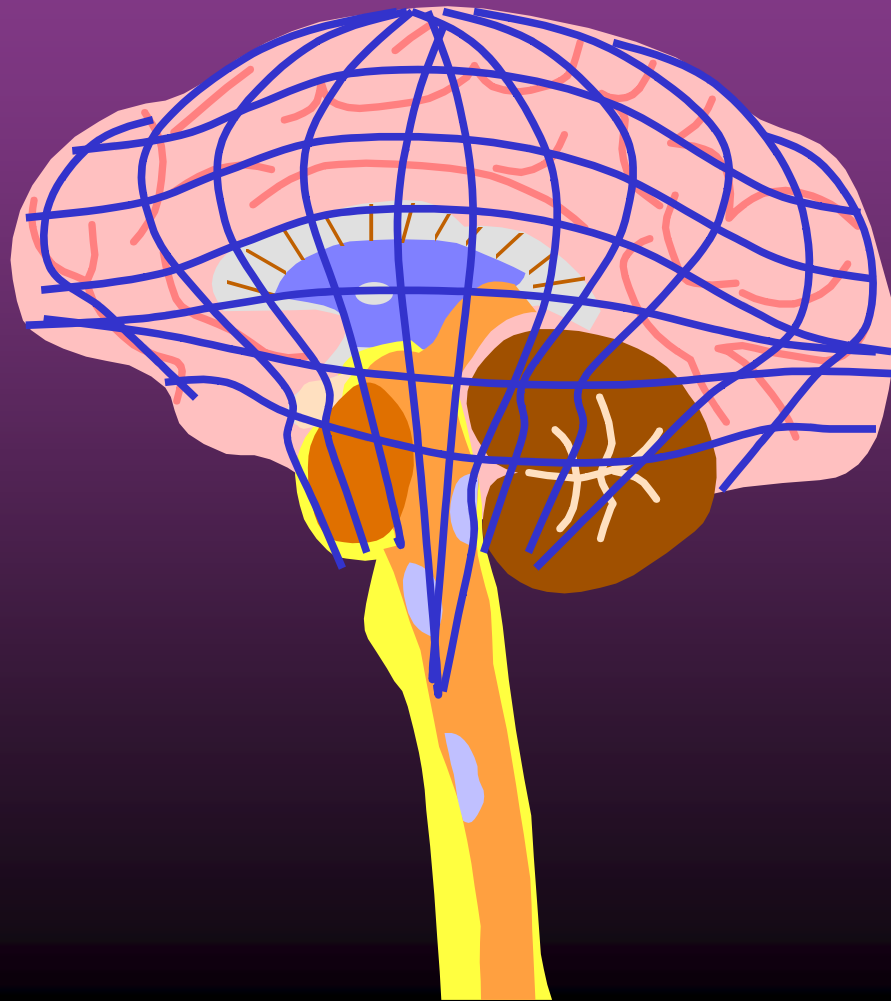


Control of Heredity through the Permanent Atom

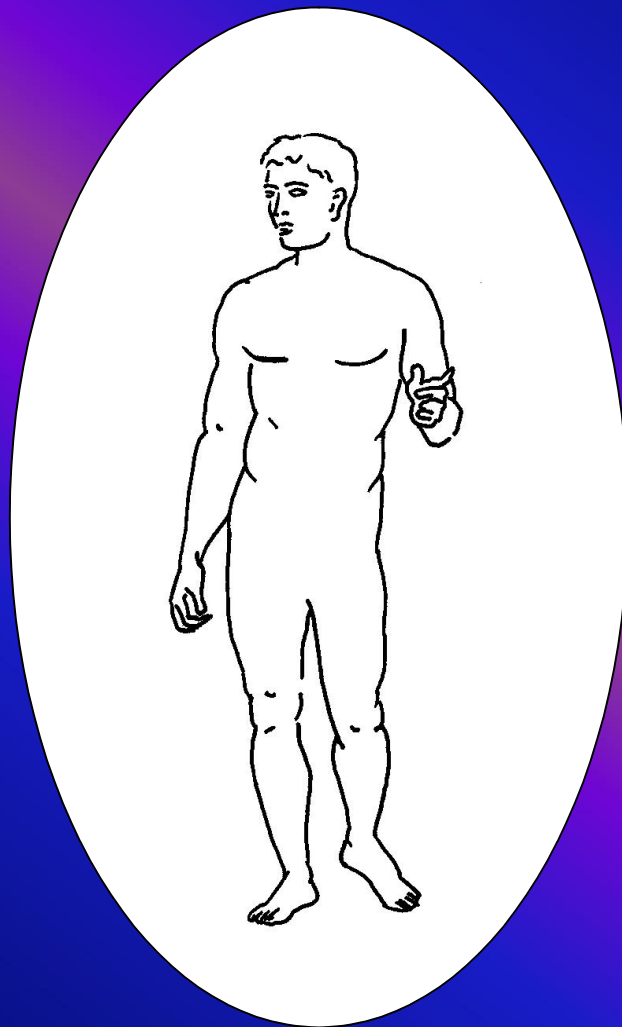
PERMANENT
ATOM



Development of Network



THANK YOU



Thank You